



400 River Birch Drive Hackleburg, AL 35564
 Phone (205) 935-1997 Fax (205) 935-3218

STONEBIRCH SERIES

32' MULTI SECTION

STANDARD FEATURES

CONSTRUCTION

- Detachable Hitches
- Steel I Beam Chassis
- Full Length Outriggers
- 2 x 4 Exterior Walls 16" o.c.
- 2 x 6 Floor Joist 16" o.c.
- Drywall Construction
- Truss Type Rafters
- Zone One Insulation
- Vaulted Ceiling Throughout
- Sprayed Acoustic Ceilings
- 5/8" Subfloor

INTERIOR

- Full Length Drapes in Living Room
- Mini Blinds Throughout
- Brushed Nickel Door Knobs Throughout
- Wrapped Molding
- Wrapped Door Jambs
- 30" Bedroom Doors

EXTERIOR

- Vinyl Siding
- Shingle Roof
- White Receiver Windows
- Exterior Light at Each Ext Door
- House Type Front Door W/Storm

KITCHEN

- Deep Stainless Steel Dbl Bowl Sink
- Decorative Glass (Most Models)
- Center Shelves in all O/H Cabinets
- Base Shelf in all Cabinets
- White Lined Cabinets
- Metal Roller Guides
- Recessed Toe Kick
- Pantry in Kitchen (Most Models)
- Electric Range
- 42" Recessed Range Hood
- Whirlpool Appliances
- Raised Panel Cabinet Doors
- Recessed Hinges on Cabinet Doors
- Brushed Nickel Cabinet Pulls
- 30" Overhead Cabinets

ELECTRICAL/PLUMBING

- 200 Amp Service
- Smoke Detectors
- 100% Cooper Wiring
- GFI Protected Receptacles in all Baths
- GFI Protected Receptacles at Kit Sink
- GFI Protected Exterior Receptacle
- Exhaust Fan in all Baths
- Electric Furnace
- 30 Gallon Water Heater
- ABS Drain Lines
- Vanguard Ultra Pex Plumbing System

BATH

- Glamour Master Bath
- 48" Shower Stall Master Bath
- Framed Mirror in all Baths
- Double Lavs in Master Bath (Most Models)
- Ceramic Toilets

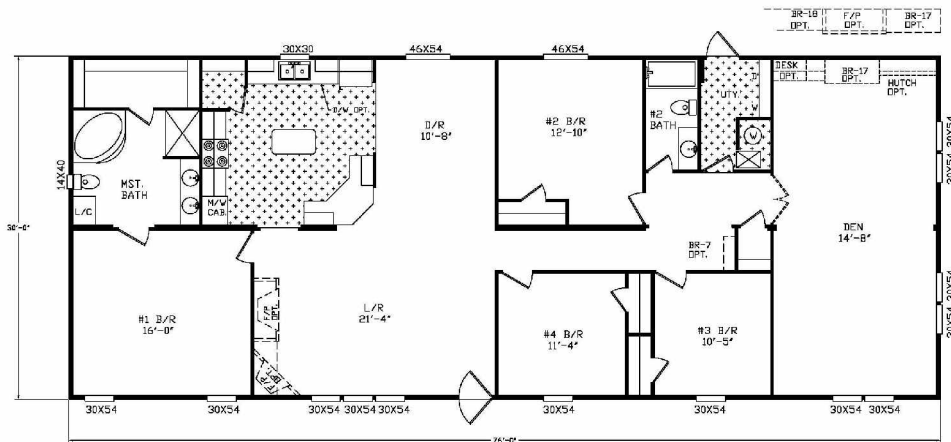
POPULAR OPTIONS

- 20' SS Refrigerator
- Thermal Zone II or III
- Ceiling Fan
- Wainscot
- Microwave Oven

- Linen Cabinets
- Upgrade Carpet
- Fireplace
- Dishwasher
- Storm Windows

- Skylights
- Steel Front Door
- Deluxe Range
- Plywood Floors
- Icemaker

Model 3002 80 x 32 4 Bedrooms 2 Baths 2280 Sq. Ft.



3002

Renderings and diagrams are meant to be representative and keeping with RIVER BIRCH'S policy of constant updating and improvement, may vary from the actual home. All dimensions are nominal. Ask your retailer for specifics.
 PRICES AND SPECIFICATIONS SUBJECT TO CHANGE WITHOUT NOTICE OR OBLIGATION.