



# RIVER BIRCH HOMES

Quality  
Value  
Service

400 River Birch Drive ~ Hackleburg, AL 35564 ~ (205) 935-1997 ~ Fax (205) 935-3218

## STONEBIRCH SERIES

## 32' MULTI SECTION

### STANDARD FEATURES

#### CONSTRUCTION

Detachable Hitches  
Steel I Beam Chassis  
Full Length Outriggers  
2 x 4 Exterior Walls 16" o.c.  
2 x 6 Floor Joist 16" o.c.  
Drywall Construction  
Truss Type Rafters  
Zone One Insulation  
Vaulted Ceiling Throughout  
Sprayed Acoustic Ceilings  
Nova Deck Flooring

#### EXTERIOR

Vinyl Siding  
Shingle Roof  
White Receiver Windows  
Exterior Light at Each Exterior Door  
House Type Front Door with Storm

#### ELECTRICAL / PLUMBING

200 AMP Service  
Smoke Detectors  
100% Copper Wiring  
GFI Protected Receptacles in all Baths  
GFI Protected Receptacles at Kitchen Sink  
GFI Protected Exterior Receptacle  
Exhaust Fan in all Baths  
Electric Furnace  
30 Gallon Water Heater  
ABS Drain Lines  
CPVC Water Lines

#### INTERIOR

Full Length Drapes in Living Room  
Mini Blinds Throughout  
Brass Door Knobs Throughout  
Wrapped Molding  
Wrapped Door Jambs  
30" Bedroom Doors

#### KITCHEN

Deep Stainless Steel Double Bowl Sink  
Decorative Glass (Most Models)  
Center Shelves in all O/H Cabinets  
Base Shelf in all Cabinets  
White Lined Cabinets  
Metal Roller Guides  
Recessed Toe Kick  
Pantry in Kitchen (Most Models)  
Electric Range  
42" Recessed Range Hood  
Name Brand Appliances  
Raised Panel Cabinet Door  
Recessed Hinges on Cabinet Doors

#### BATH

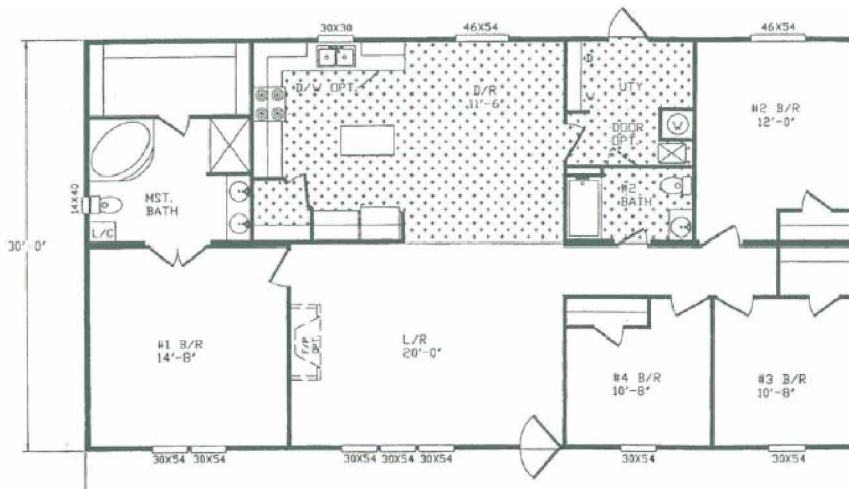
Glamour Master Bath  
48" Shower Stall Master Bath  
Framed Mirror in all Baths  
Double Lavs in Master Bath  
Ceramic Toilets

### POPULAR OPTIONS

Dishwasher  
Thermal Zone II or III  
Ceiling Fan  
Border  
Music System

Upgrade Carpet  
Wainscot  
Storm Windows  
Linen Cabinet  
Plywood Floors

Fireplace  
Steel Front Door  
Deluxe Range  
Icemaker  
Skylights



**MODEL 3006**  
**60 x 32**  
**4 Bedroom**  
**2 Bath**  
**1680 Sq. Ft.**