

STONEBIRCH SERIES

28' MULTI SECTION

STANDARD FEATURES

CONSTRUCTION

Detachable Hitches
Steel I Beam Chassis
Full Length Outriggers
2 x 4 Exterior Walls 16" o.c.
2 x 6 Floor Joist 16" o.c.
Drywall Construction
Truss Type Rafters
Zone One Insulation
Vaulted Ceiling Throughout
Sprayed Acoustic Ceilings
5/8" Subfloor

INTERIOR

Full Length Drapes in Living Room
Mini Blinds Throughout
Brushed Nickel Door Knobs Throughout
Wrapped Molding
Wrapped Door Jambs
30" Bedroom Doors

EXTERIOR

Vinyl Siding
Shingle Roof
White Receiver Windows
Exterior Light at Each Ext Door
House Type Front Door W/Storm

KITCHEN

Deep Stainless Steel Dbl Bowl Sink
Decorative Glass (Most Models)
Center Shelves in all O/H Cabinets
Base Shelf in all Cabinets
White Lined Cabinets
Metal Roller Guides
Recessed Toe Kick
Pantry in Kitchen (Most Models)
Electric Range
42" Recessed Range Hood
Whirlpool Appliances
Raised Panel Cabinet Doors
Recessed Hinges on Cabinet Doors
Brushed Nickel Cabinet Pulls
30" Overhead Cabinets

ELECTRICAL/PLUMBING

200 Amp Service
Smoke Detectors
100% Cooper Wiring
GFI Protected Receptacles in all Baths
GFI Protected Receptacles at Kit Sink
GFI Protected Exterior Receptacle
Exhaust Fan in all Baths
Electric Furnace
30 Gallon Water Heater
ABS Drain Lines
Vanguard Ultra Pex Plumbing System

BATH

Glamour Master Bath
48" Shower Stall Master Bath
Framed Mirror in all Baths
Double Lavs in Master Bath (Most Models)
Ceramic Toilets

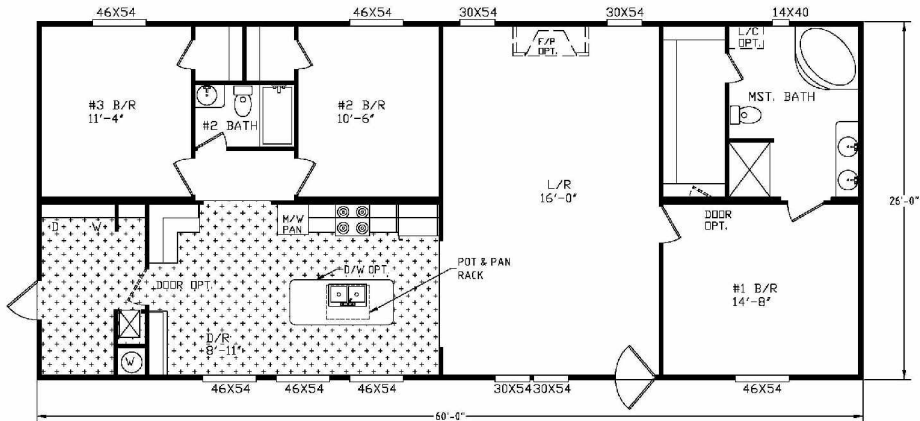
POPULAR OPTIONS

20' SS Refrigerator
Thermal Zone II or III
Ceiling Fan
Wainscot
Microwave Oven

Linen Cabinets
Upgrade Carpet
Fireplace
Dishwasher
Storm Windows

Skylights
Steel Front Door
Deluxe Range
Plywood Floors
Icemaker

Model 4027 64 x 28 3 Bedrooms 2 Baths 1560 Sq. Ft.



4027

Renderings and diagrams are meant to be representative and keeping with RIVER BIRCH'S policy of constant updating and improvement, may vary from the actual home. All dimensions are nominal. Ask your retailer for specifics.
PRICES AND SPECIFICATIONS SUBJECT TO CHANGE WITHOUT NOTICE OR OBLIGATION.